

Kuwait | August 22, 2021

On Sunday, Bursa Kuwait started the week on a mixed note, as two out of four major indices ended in the red while the other two ended higher. Premier Market Index declined 0.27% to close at 7,271.97 points, and All-Share Index ended 0.16% lower at 6,657.76 points. On the contrary, Main Market Index rose 0.19% to end at 5,445.18 points, and BK Main 50 Index increased 0.14% to settle at 5,736.89 points.

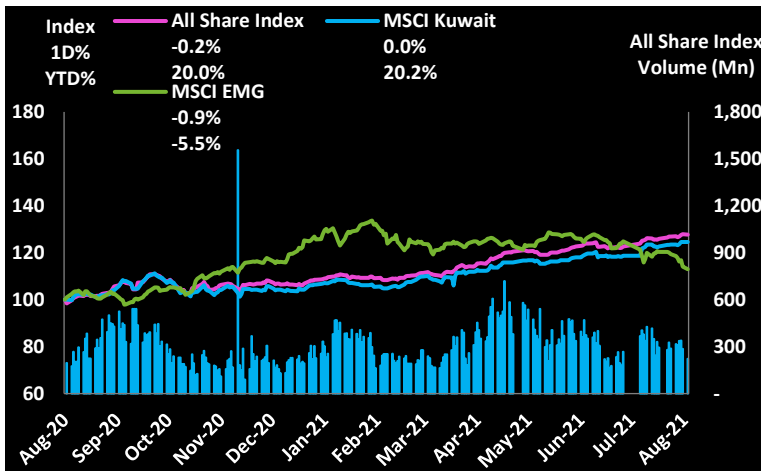
In the Premier Market Index, NINV was the top percentage gainer with a gain of 3.31%, followed by HUMANSOFT with an increase of 0.96%. On the other hand, AUB was the top percentage loser with a loss of 2.92%, followed by BPCC with a decline of 0.83%. The total value traded in the Premier Market Index was KWD 32.5 mln, and the volume was 99.2 mln shares. In the Main Market Index, AAYAN, which rose 1.31%, witnessed the highest traded value of KWD 2.1 mln and the second-highest volume of 13.7 mln shares. MAZAYA, which fell 4.30%, recorded the second-highest traded value of KWD 1.5 mln and the highest volume in the index of 18.1 mln shares.

Economic / Company News

- [BPCC - Financial Results of 1Q21 for the period ended 31.7.21](#)
- [AGLTY - Transcript of Analysts Conference](#)
- [KIB - Completion of the Sale of KIB's exposure to NMC Health Care Company](#)
- [KPROJ - Moody's issues the credit rating of Kuwait Projects Company](#)
- [SCEM - The date of company withdrawal from the stock exchange](#)
- [Oil posts biggest week of losses in nine months as Delta variant spreads](#)

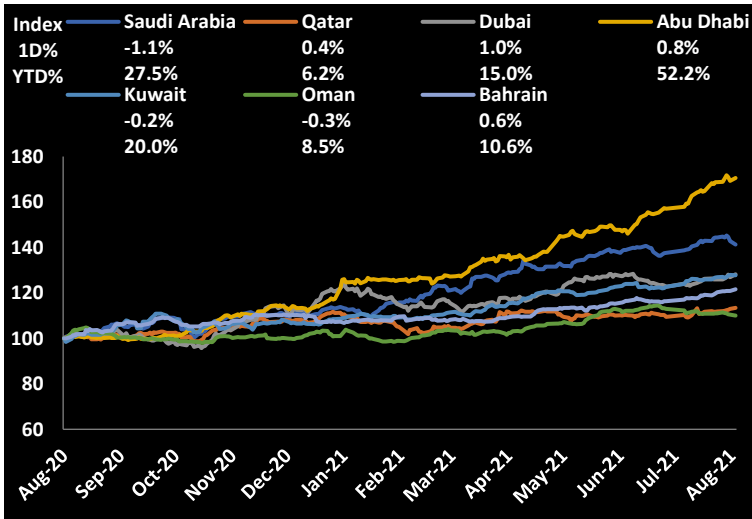
Source: Bursa Kuwait, Reuters

All Share Index (1-Year Performance)



Value Traded: 45.73 mln | Compared to 1Y Daily Avg: -15.9%

GCC Bourses



Source: Publicly available market data

Major Global Indices

Indices	Last Price	1D%	WTD%	MTD%	YTD%
DJ Industrial	35,120.08	0.6	-1.1	0.5	14.7
S&P 500	4,441.67	0.8	-0.6	1.1	18.3
Nikkei225	27,013.25	-1.0	-3.4	-1.0	-1.6
Hang Seng	24,849.72	-1.8	-5.8	-4.3	-8.7
FTSE 100	7,087.90	0.4	-1.8	0.8	9.7
CAC 40	6,626.11	0.3	-3.9	0.2	19.4
MSCI World	3,080.02	0.5	-1.4	0.4	14.5
MSCI Emg	1,220.78	-0.9	-4.7	-4.5	-5.5

Source: Publicly available market data

Data as on 20/8

Major Commodities / Currencies

	Last Price	1D%	WTD%	MTD%	YTD%
Gold (\$/MT Ounce)	1,784.00	0.1	0.3	-1.8	-6.0
Silver (\$/Troy Ounce)	23.16	-0.5	-2.6	-9.3	-12.6
Brent Crude Oil (\$/BBL)	65.18	-1.9	-7.7	-14.6	25.6
OPEC Oil (\$/BBL)	66.08	-4.7	-7.3	-11.2	30.1
EUR/USD	0.855	-0.2	0.8	1.5	4.9
USD Index	93.51	-0.1	1.1	1.4	3.9
JPY	109.80	0.0	0.2	0.1	6.3

Source: Publicly available market data

Data as on 20/8

Market Calendar

Date	Day	Company Name	Event
23-Aug	Monday	PAPCO	BoD Meeting
23-Aug	Monday	ARKAN	BoD Meeting
25-Aug	Wednesday	REAM	BoD Meeting
25-Aug	Wednesday	ABAR	AGM
29-Aug	Sunday	ALMAL	AGM

Source: Bursa Kuwait

Daily Top Gainers

Stock (Fils)	Last Price	52 Week High	Low	1D%	YTD%	Value (KD'000)
WARBACAP	76.2	80.0	41.5	21.0	55.5	89.2
FTI	48.5	57.9	29.0	16.6	31.1	0.2
RKWC	73.7	80.0	61.0	14.3	13.4	55.5
PAPER	215.0	222.0	125.0	11.4	38.7	6.4
NOOR	264.0	271.0	138.0	6.5	55.3	571.0

Daily Top Losers

Stock (Fils)	Last Price	52 Week High	Low	1D%	YTD%	Value (KD'000)
KSHC	29.9	39.6	24.6	-13.1	-6.6	0.7
ENERGYH	38.1	46.5	17.6	-8.2	36.1	4.9
MUNSHAAT	50.4	121.0	44.5	-4.9	-28.0	3.7
KCIN	760.0	990.0	600.0	-4.9	1.3	0.04
KINS	430.0	459.0	341.0	-4.4	11.7	0.4

Daily Volume Leaders

Stock (Fils)	Last Price	1D%	YTD%	Volume ('000)
NINV	187.0	3.3	38.5	30,763
AUB	266.0	-2.9	17.2	25,710
MAZAYA	82.3	-4.3	44.4	18,053
AAYAN	155.0	1.3	68.5	13,722
KFH	800.0	-0.6	18.2	10,045

Daily Value Leaders

Stock (Fils)	Last Price	1D%	YTD%	Value (KD'000)
KFH	800.0	-0.6	18.2	8,026
AUB	266.0	-2.9	17.2	6,877
NINV	187.0	3.3	38.5	5,651
ZAIN	602.0	0.7	-0.7	2,399
AAYAN	155.0	1.3	68.5	2,132

Source: Boursa Kuwait (for all tables and charts on page 2)

Stocks Trading Near 52 Weeks High

Stock (Fils)	Last Price	52 W High	% Below 52 W High	Value (KD'000)
JAZEERA	774.0	780.0	-0.8	392.9
NBK	899.0	907.0	-0.9	1,944.4
KFH	800.0	808.0	-1.0	8,026.5
GINS	899.0	908.0	-1.0	2.7
KAMCO	134.0	136.0	-1.5	66.5

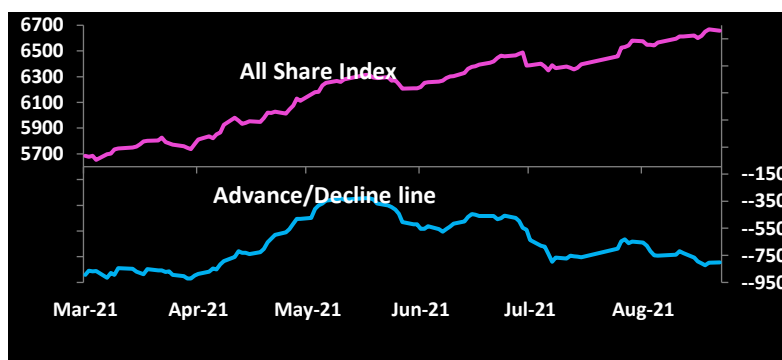
Stocks Trading Near 52 Weeks Low

Stock (Fils)	Last Price	52 W Low	% Above 52 W Low	Value (KD'000)
NAPESCO	780.0	764.0	2.1	1.2
AZNOULA	225.0	220.0	2.3	207.7
KPROJ	153.0	147.0	4.1	50.1
STC	859.0	822.0	4.5	80.7
CBK	500.0	474.0	5.5	0.5

New High / Low

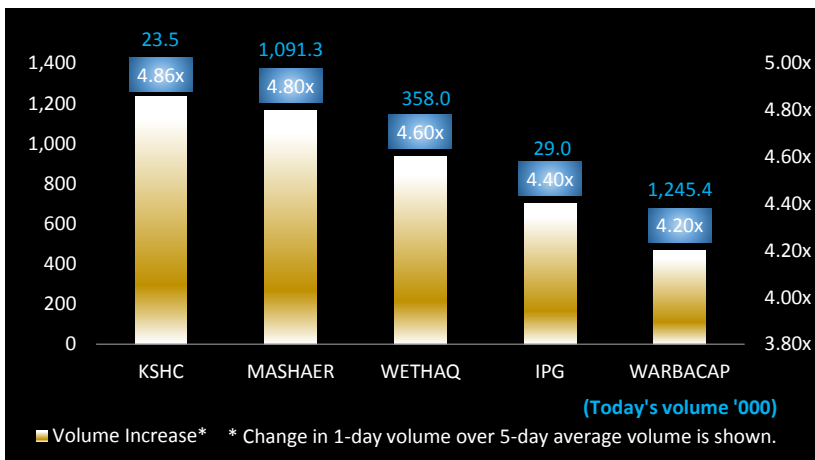
1D	1W
2	2
0	0

Market Breadth

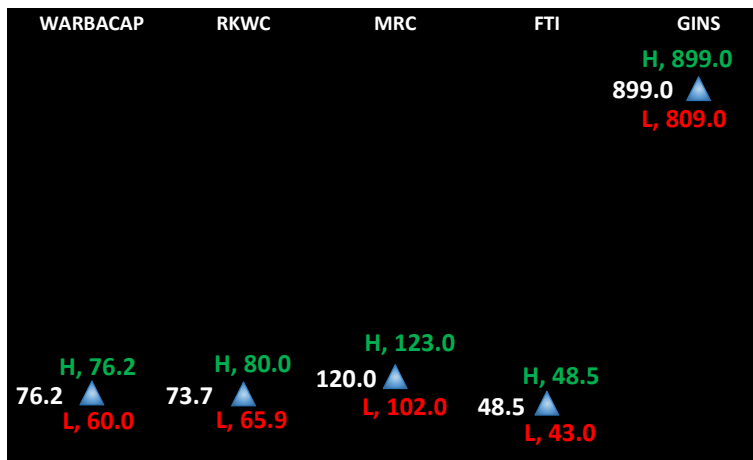


Advancing Volume	110.0 Mln	Advancing Shares	59
Declining Volume	102.0 Mln	Declining Shares	58
Unchanged Volume	10.3 Mln	Unchanged Shares	21

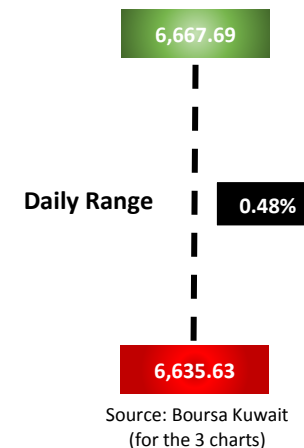
Volume Trending Stocks



Stocks with Highest Daily Price Range (Fils)



All Share Index



Sectoral Valuation Multiplies

Sector/Indices	Market Cap (KD Mln)	Weight (%)	P/E (TTM)*#	P/BV (TTM)*
All Share Index	39,043.62	100.00%	23.4x	1.7x
Premier Market	29,685.94	76.03%	22.2x	2.1x
Main Market	9,357.68	23.97%	15.0x	1.0x
BANKS	22,520.72	57.68%	31.5x	2.2x
FINANCIAL SERVICES	3,552.31	9.10%	9.4x	1.1x
REAL ESTATE	2,546.90	6.52%	34.2x	1.0x
INSURANCE	490.76	1.26%	9.5x	1.0x
INDUSTRIALS	4,115.82	10.54%	23.9x	1.3x
BASIC MATERIALS	957.43	2.45%	26.1x	1.4x
CONSUMER STAPLES	227.46	0.58%	16.7x	1.5x
TELECOMMUNICATIONS	3,368.97	8.63%	15.4x	1.8x
ENERGY	282.93	0.72%	17.0x	1.1x
TECHNOLOGY	10.10	0.03%	24.9x	0.9x
HEALTH CARE	164.36	0.42%	35.4x	2.6x
CONSUMER DISCRETIONARY	558.37	1.43%	20.7x	1.6x
UTILITIES	247.50	0.63%	20.1x	3.5x

Source : Boursa Kuwait and KIC Research *Based on data as on TTM 31.3.2021 # Market cap weighted, excluding companies with negative earnings

Sectoral Performance

Sectoral Indices	Last Price	1D%	WTD%	MTD%	YTD%	Advances / Declines Ratio	Volume Traded / 5-day Avg Vol
All Share Index	6,657.76	-0.2	-0.2	1.2	20.0	1.02	0.74
Premier Market	7,271.97	-0.3	-0.3	1.5	20.2	1.00	1.06
Main Market	5,445.18	0.2	0.2	0.1	19.6	1.02	0.60
BANKS	1,524.16	-0.4	-0.4	1.6	20.7	1.00	0.89
FINANCIAL SERVICES	1,247.99	0.3	0.3	2.6	34.2	0.78	0.85
REAL ESTATE	1,211.05	-0.5	-0.5	0.1	27.1	0.61	0.48
INSURANCE	1,433.79	1.9	1.9	2.1	24.0	0.67	2.94
INDUSTRIALS	1,158.06	0.3	0.3	-0.1	30.0	2.17	0.52
BASIC MATERIALS	1,073.48	-0.3	-0.3	-0.3	19.5	2.00	0.55
CONSUMER STAPLES	746.48	0.2	0.2	-3.2	-8.8	N/M	0.85
TELECOMMUNICATIONS	1,098.75	0.6	0.6	0.8	-0.3	N/M	0.94
ENERGY	1,357.59	-1.7	-1.7	-4.1	6.3	1.00	1.56
TECHNOLOGY	734.78	-3.8	-3.8	-2.9	46.2	0.00	1.84
HEALTH CARE	807.12	0.0	0.0	0.8	-2.4	N/M	0.00
CONSUMER DISCRETIONARY	1,036.26	0.4	0.4	0.1	38.8	1.00	0.49
UTILITIES	592.11	0.4	0.4	-0.9	-18.8	N/M	0.76

Source : Boursa Kuwait

Kuwait Investment Co. (K.S.C.P)

5th Floor, Souk Al-Manakh, Mubarak Al-Kabir Street, Sharq, Kuwait

P.O. Box 1005, Safat 13011, Kuwait

Tel: (+965) 1888852 (+965) 22967000

Email: research@kic.com.kw

Websites: www.kic.com.kw / www.kictrade.com



Disclaimer:

This document and material contained herewith have been produced, compiled, and issued by Kuwait Investment Company- KIC (K.S.C.P.). Kuwait Investment Company is a public shareholding company, incorporated and domiciled in the State of Kuwait, and is regulated by the Central Bank of Kuwait (CBK) and Capital Markets Authority (CMA) as an investment and finance company. The Company has obtained the information used in this document from sources it believes to be reliable, but the issuer does not guarantee, neither its accuracy nor completeness, nor provides an independent verification of the material contained therein. KIC may, from time to time to the extent permitted by law, participate or invest in other financing transactions with the issuers of the securities, perform services for or solicit business from such issuer and/or have a position or effect transactions in the securities or options thereof. KIC may, to extent permitted by the applicable Kuwaiti Law or other applicable laws and regulations, effect transactions in the securities before this material is published to recipients. The opinions and estimates expressed herein are those of the issuer and subject to change at any time without any prior notice. Accordingly, no representation or warranty, expressed or implied, is made as to and no reliance should be placed on the fairness, accuracy, completeness or correctness of the information and opinions contained in this document. KIC accepts no liability for any loss arising from the use of this document or its contents or otherwise arising in connection therewith. This document should not be relied upon or used in substitution for the exercise of sound judgment. KIC shall have no responsibility or liability whatsoever in respect of any inaccuracy in or omission from this or any other document prepared by KIC for, or sent by KIC to any entity, and any such entity shall be responsible for conducting its own scrutiny, investigation, and analysis of the information contained or referred to in this document and of evaluating the merits and risks involved in the securities forming the subject matter of this or other such document.

Opinions and estimates constitute KIC's judgment and are subject to change without prior notice. Past performance is not a reliable indicator of future results. This document does not constitute an offer or invitation to subscribe for or purchase any securities, and neither this document nor anything contained herein shall form the basis of any contract or commitment whatsoever. This document is not an offer to sell or a solicitation to buy any securities. It is being furnished to the reader solely for his/her information and may not be redistributed inside Kuwait or by any jurisdiction outside Kuwait where this action is restricted by law. Entities who receive this report should make themselves aware of and adhere to any such restrictions. By accepting receipt of this report, the reader agrees to be bound by the foregoing limitations.